



Lisker Music Foundation  
~Music with a Story~



## “Voloshin” Motif Challenge

**Lisker Music Foundation (LMF)** is a passionate non-profit organization which strives to support young artists by offering them the platform to showcase their brilliant abilities, while simultaneously infusing the community with world class music making. As a natural progression to our mission, we are very excited to announce the **2<sup>nd</sup> Annual Composition Challenge**!

### The Challenge

Compose a musical work based on a musical motif provided by LMF.

### About the Motif

In partnership with the **Voloshin Family**, who have been among the most passionate supporters of the Lisker Music Foundation from the beginning, this year's challenge pays tribute to the memory of **Mila Voloshin**, who sadly passed away in 2015 at age 48 after fight with cancer. Your challenge is to compose a piece incorporating a musical motif made up from the initials of the Voloshin family members.



**Mi-La-Re-Do-Mi**

## Meet the Voloshin Family



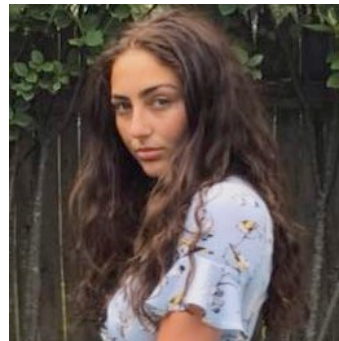
**Mila** = Mi & La



**D**anielle = Re



**C**ameron = Do



**E**tana = Mi

## Ways of Incorporating the Motif

To represent the unity of the Voloshin family, the Motif must be used in its entirety (inclusive of specific notes and rhythms), as represented in the logo. One aspect that would be good to consider is the fact the Mila Voloshin passed away so young after a valiant fight with Cancer. Although her absence is felt every day, and is fiercely missed, her incredible character is evident in the success, strength, and happiness of her family.



Beyond this, we encourage composers to use their imagination on different ways to communicate the inspiration of this challenge. Some other ways to develop the motif might include, but are not limited to:

- **Interval Inversions and Expansions**
- **Rhythmic Manipulations**
- **Harmonies (incorporate the individual initials in to a progression, or keys for unique sections of the piece, etc.)**

To further inspire your usage of the motif as a whole, and/or as individual notes/characters, here are some descriptive term representatives of each family member.

**Mila:** Mother & Wife, Loving, Nurturing, Positive, Optimist, Creative, Strong Spirited

**Danielle:** Oldest Daughter/Sister, Sweet, Ambitious, Fun-Loving, Adventurous

**Cameron:** Middle Child, Intellectual, Logical, Funny, Independent, Strong Will

**Etana:** Youngest Child, Fun, Curious, Determined, Independent

Prize

**\$1000**

&

A premier performance of original work in the LMF 2019 Concert Season  
Professional Audio/Video Recording of the Premier

***Prize is presented by the Voloshin Family Foundation***

## Eligibility

- Applicants must be 40 years old or younger as of March 1st, 2019
- Work must be written for Piano + Violin Duo
- Composition must not exceed 10 minutes in length
- Applicant is permitted to submit multiple works, but each work requires a separate application and a fee

## Evaluation Factors

### Technique

- Organization of pitch elements (such as melody, harmony, and counterpoint)
- Organization of rhythmic elements
- Formal design
- Accuracy and clarity of notation
- Appropriate writing for instruments and/or voices

### Musicality

- Stylistic coherence (regardless of the particular style)
- Effective handling of unity/variety and tension/release
- Effective use of dynamics, articulations, and expression marks
- Interaction of all of the elements (atmosphere, mood, direction, and flow of the music)

### Originality

- Refers to aspects of the piece that reveal the composer's individual "voice" and distinguish the piece from a musical exercise or a direct imitation of another piece
- The ultimate effectiveness in delivering the story and inspiration of the Motif; referring to the idea, background, impact, and development.

## Submission Guideline

- Application for the Composition Challenge must be received by March 1st, 2019 (11:59 PM CST).
- The application fee is **\$35.00** payable by credit cards or PayPal
- All Entree fees are non-refundable
- Bio is no longer than 300 words. High-Definition Picture must be attached.
- The application with computer-generated PDF score and MIDI file must be submitted online or attached to email.
- Proof of age (copy of a passport, state issued ID, birth certificate, etc)
- Essay (1-Page Max) describing your work, and how you approached integrating the outlined challenge into your creative process, and its outcome.
- The chosen composition is not subject to change.
- Plagiarism of copyrighted material is illegal. It is the responsibility of the composer to assure that music submitted is not copyrighted. If any elements of the composition entry are copyrighted, it is the responsibility of the composer to secure permission for use of those elements.

## Results

- The winning work will be announced via email no later than the end of March, 2019.
- The winner will receive a Cash Award and a diploma in the mail.
- The jury decision is final and not to be discussed.
- The LMF reserves the right to use photos and videos taken during the concert performance, recorded prior to the stage performance, promotion company's future events, and publish them on its website or social networks.



## Ways to Submit

***\*\*Please view application for checklist to be sure your submission is complete\*\****

**Online (Preferred):** Provide a link to DropBox, Google Drive, or other site from which we can download your materials.

**By Mail:** You can mail printed materials, or a USB Stick to:

**Lisker Music Foundation**  
792 Greenwood Road  
Northbrook, IL 60062

**Application Fee** can be submitted via PayPal, Chase Quickpay, or Venmo. If you choose to submit a check, please include it as part of your submission package to the address above.

***\*\*All materials must be received by March 1st, 2019***

**You are encouraged to ask questions about any aspect of this challenge.**

We are happy to answer your emails, speak with you on the phone to provide any additional direction or instruction that might help you produce a piece of music you are proud of!

**For more info:**

[ekelner@liskermusicfoundation.org](mailto:ekelner@liskermusicfoundation.org) | (847) 272-7003